

FORM B – BUILDING

Assessor's Number USGS Quad Area(s) Form Number

117/206 [] [] 179

MASSACHUSETTS HISTORICAL COMMISSION
MASSACHUSETTS ARCHIVES BUILDING
220 MORRISSEY BOULEVARD
BOSTON, MASSACHUSETTS 02125

Town: Dartmouth

Place: (*neighborhood or village*) Padanaram

Photograph



Address: 338 Elm Street

Historic Name: South Dartmouth Congregational Church

Uses: Present: Commercial Use

Original: Religious – Church

Date of Construction: c 1854

Source: Local Histories and Historic Maps

Style/Form: Shingle with Colonial Revival Detailing

Architect/Builder:

Exterior Material:

Foundation: Unknown

Wall/Trim: Wood Shingles

Roof: Asphalt Shingles

Outbuildings/Secondary Structures:

Major Alterations (*with dates*):

Change of fenestration – 1970 and again post 1983

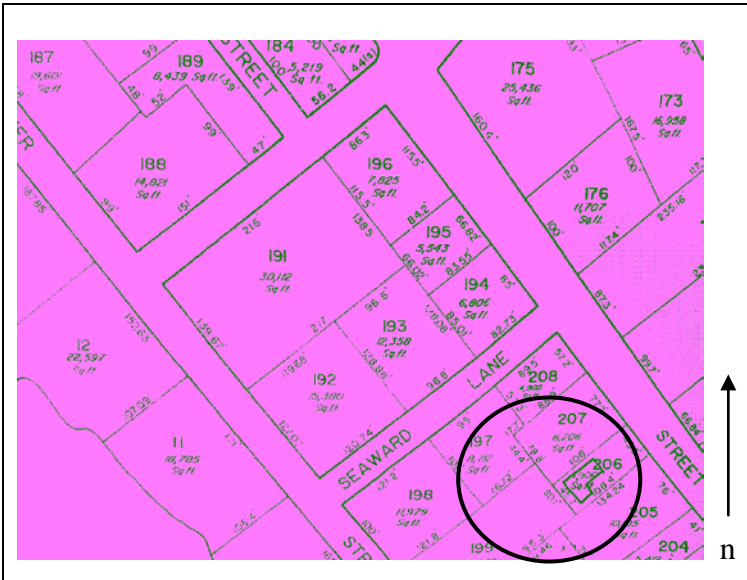
Condition: Poor

Moved: no | | yes | x | **Date** 1860 (Postcard Book)

Acreage:

Setting: The building faces east is set back from the edge of the road.

Topographic or Assessor's Map



Recorded by: Geoffrey E. Melhuish, ttl-architects

Organization: Town of Dartmouth

Date (*month / year*): January 2010

INVENTORY FORM B CONTINUATION SHEET

MASSACHUSETTS HISTORICAL COMMISSION

220 MORRISSEY BOULEVARD, BOSTON, MASSACHUSETTS 02125

DARTMOUTH

338 Elm Street

Area(s) Form No.

___ Recommended for listing in the National Register of Historic Places.

If checked, you must attach a completed National Register Criteria Statement form.

Use as much space as necessary to complete the following entries, allowing text to flow onto additional continuation sheets.

ARCHITECTURAL DESCRIPTION:

Describe architectural features. Evaluate the characteristics of this building in terms of other buildings within the community.

338 Elm Street DAR.179 is a two-story wood-frame structure which was originally built as a church. The 1983 Survey form indicates that the original row of stepped pointed arch windows to each side of the entry were removed and replaced by the two bow windows currently in place. The photographs which accompany the survey form show an oculus window in the gable end. While the oculus window remains, two 1-1 sliding sash windows have been added below. The dentil course at the cornice line remains. The property has been significantly altered and no longer conveys its period of significance; however, the property is significant for its associates with St. Mary's Parish.

HISTORICAL NARRATIVE

Discuss the history of the building. Explain its associations with local (or state) history. Include uses of the building, and the role(s) the owners/occupants played within the community.

The South Dartmouth Congregational Church built 338 Elm Street DAR.179 c 1854 as a vestry and moved the building to this site in 1860 after purchasing the land. The chapel was used for mid-week prayer meetings and social gathering until it was sold to the Roman Catholic bishop in 1923. A new Roman Catholic church was dedicated in 1956, and then Episcopal services were held there until the building of St. Peter's Church in 1964. When the Parish moved, the church building was sold. The structure has been significantly altered. *The building now houses several businesses including the weekly Chronicle* (Denton 1983).

BIBLIOGRAPHY and/or REFERENCES

Beers, F.W. & Co. *Dartmouth South, South Dartmouth*. Bristol County 1871. [available online at historicmapworks](#)

Beers, F.W. & Co. *Dartmouth, Dartmouth, Smith Mills Town, Russells Mills Town*. Bristol County 1871. [available online at historicmapworks](#)

Everts & Richards. *Dartmouth Town, Dartmouth, Smith Mills*. Bristol County, 1895. [available online at historicmapworks](#)

Everts & Richards. *Dartmouth South Town, Dartmouth Post Office, Nonquitt town, Bay View*. Bristol County, 1895. [available online at historicmapworks](#)

FamilySearch

Glennon, Beverly Morrison and Judith Navas Lund. *Greeting from Dartmouth, Massachusetts: a postcard history*. Dartmouth, MA: Garrison Wall Publishers, 2003.

Sanborn Fire Insurance Maps. Nov 1924 and August 1932.

Street Directories.

Town of Dartmouth. Assessors Records.

U.S. Commerce Dept. Census Bureau, 1840-1930.

USGS MAPS 1893, 1935, 1941. [UNH]

Walling, Henry Francis. *Map of the Town of Dartmouth*. Bristol County, 1856. Available online at Boston Public Library.

Weinstein Ken. *Massachusetts Historical Commission Inventory Form B*. Dartmouth: Dartmouth Historical Commission, 1983.

INVENTORY FORM B CONTINUATION SHEET

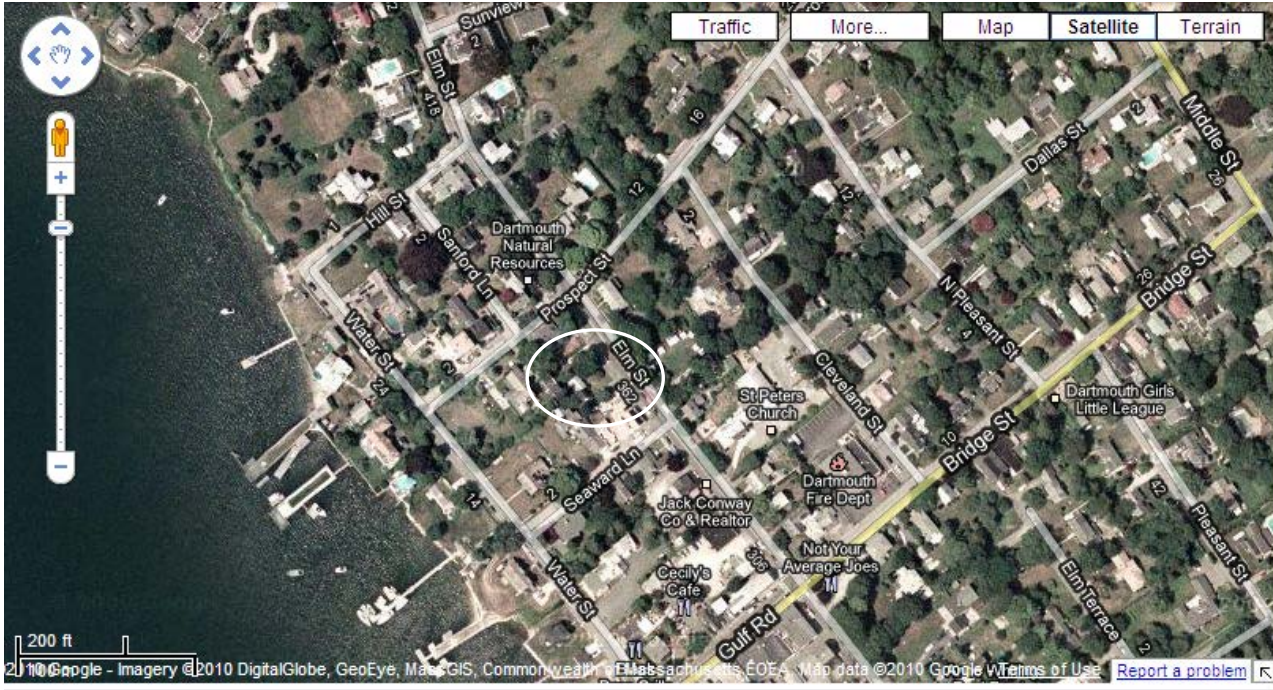
MASSACHUSETTS HISTORICAL COMMISSION

220 MORRISSEY BOULEVARD, BOSTON, MASSACHUSETTS 02125

DARTMOUTH

338 Elm Street

Area(s) Form No.



↑
n